

24-Port 10/100Mbps Fast Ethernet Switch



Power-Saving High Performance Ethernet Networking

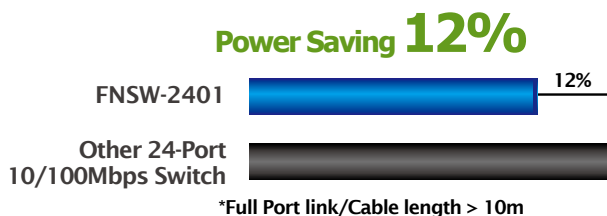
In line with the energy-saving trend worldwide, PLANET delivers the new generation **Green Networking Switch- FNSW-2401**. The FNSW-2401 is a 24-Port 10/100Base-TX Fast Ethernet Switch upgraded from earlier version and brings both benefits of energy saving and high performance. It is specially designed for SOHO, SMB and Workgroup users. The FNSW-2401 uses new engine that provides power saving up to 12% less energy but maintains high performance efficiently.

Energy Saving

The FNSW-2401 incorporates two advanced Green Networking technologies:

- **Intelligent scales power based on cable length**

The **intelligent scales power**, is an intelligent algorithm that actively determines the appropriate power level based on cable length. When connecting to the FNSW-2401 with Ethernet cable longer than 10m, a device can obtain maximum power saving because the FNSW-2401 would automatically detect the Ethernet cable length and reduce power usage. The connected device can substantially reduce overall power consumption, which makes a significant contribution to energy saving.



**Save
19.272 Watts
yearly**

High Performance

The high performance throughput (filtering/forwarding rate: 14,880 packets per second in 10Mbps, 148,800pps in 100Mbps) and dynamic shared memory buffer help the FNSW-2401 boost bandwidth, eliminate unnecessary traffic, and relieve congestion on your critical server path. It also supports IEEE 802.1p Class of Service (CoS) features to improve network utilization more efficiently. The FNSW-2401 is the ideal choice to alleviate bottlenecks in client / server and peer-to-peer environments in a cost effective way.

Plug and Play

The FNSW-2401 provides users with high speed network connections. With its Auto-Negotiation capability, all the RJ-45/STP ports of the FNSW-2401 can be configured to speeds of 10/20Mbps or 100/200Mbps automatically. What's more is the MDI/ MDIX auto-detection for easy, plug and play connection, regardless of the cabling type, straight through or crossover.

KEY FEATURES

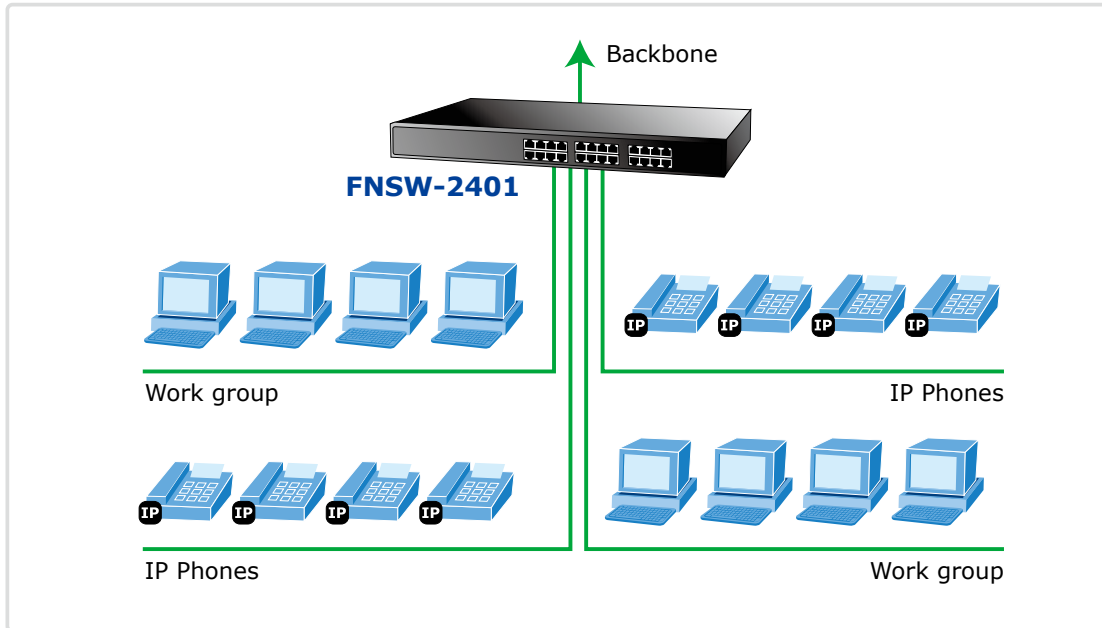
- Green Ethernet for energy saving
- Comply with IEEE 802.3 10Base-T and IEEE 802.3u, 100Base-TX standards
- 24-Port 10/100Base-TX Fast Ethernet Switch
- Auto MDI / MDI-X on each port for easy switch / hub cascading
- Each switching port supports auto-negotiation -10 / 20Mbps, 100 / 200Mbps supported
- Store-and-Forward mode with wire-speed filtering and forwarding rates
- 8K absolute MAC addresses table
- Handles up to 1522 bytes packet size
- IEEE 802.3x full-duplex/half-duplex back-pressure flow control
- IEEE 802.1p Class of Service traffic control
- FCC, CE class A compliant

APPLICATIONS
Backbone Switch

With up to 4.8Gbps switching fabric, the FNSW-2401 can provide high bandwidth connectivity to Fast Ethernet network backbone or as the backbone of your workgroup.

Department Switch

Uplink directly by any straight / crossover cable to the backbone switch, the FNSW-2401 provides the connectivity to back plane yet segment the network traffic of the department to your backbone.


SPECIFICATION

Product	24-Port 10/100Mbps Fast Ethernet Switch
Model	FNSW-2401
Hardware Specification	
10/100/Base-TX Ports	24
Switch Processing Scheme	Store-and-Forward
Switch fabric	4.8Gbps
Switch throughput	3.57Mpps
Shared Buffer	1.25Mbits
Address Table	8K entries
Flow Control	Back pressure for half duplex mode, IEEE 802.3x Pause Frame for full duplex mode
Power Green Ethernet	Supports from 10m to 100m. Power saving up to 12%.
Standards Conformance	
Standards Compliance	IEEE 802.3 (Ethernet)
	IEEE 802.3u (Fast Ethernet)
	IEEE 802.3x (Full-duplex flow control)
	IEEE 802.1p (Class of Service)

ORDERING INFORMATION

FNSW-2401	24-Port 10/100Mbps Fast Ethernet Switch
-----------	---